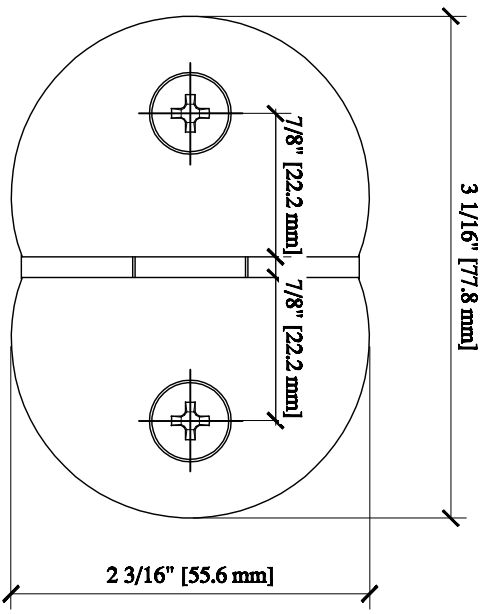
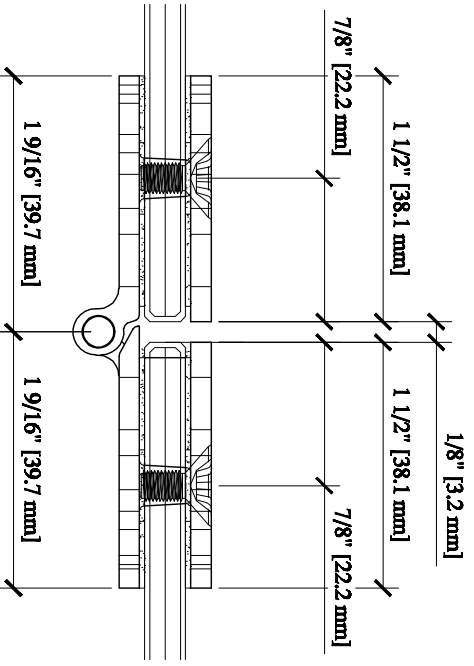


GLASS FABRICATON



**180 DEG CABINET HINGE
ASSEMBLY DETAIL USED FOR:**

CATALOG NUMBER	FINISH
FA180CH	CHROME
FA180SC	SATIN CHROME
FA180BR	BRASS

NOTE : THE MAXIMUM RECOMMENDED DOOR WIDTH IS 24" (610 mm) WITH A MAXIMUM WEIGHT OF 50 lbs. (22.7 kg) USING TWO HINGES & 75 lbs. (34 kg) USING THREE HINGES

ALWAYS USE DIMENSIONS SHOWN ON THE PLAN. DO NOT SCALE OR DIMENSION ACTUAL DRAWING TO ENSURE ACCURACY

CRL ARCHITECTURAL PRODUCTS
 P.O. BOX 1000
 FRI, 800-421-6144 FAX, 800-262-3299
 WWW.CRLAURANCE.COM
 CRLAURANCE CO. ©

DESCRIPTION:	CAT. NO. (SEE CHART)	DATE
180 DEGREE GLASS TO GLASS CABINET HINGE	FA180	11/24/08
FOR 1/4" (6mm) TO 5/16" (8mm)	FILE NAME: FA180	SCALE: N.T.S.
	DRAWN BY: G. P. J.	CHECKED BY: C.H.
		SHEET 1 OF 1